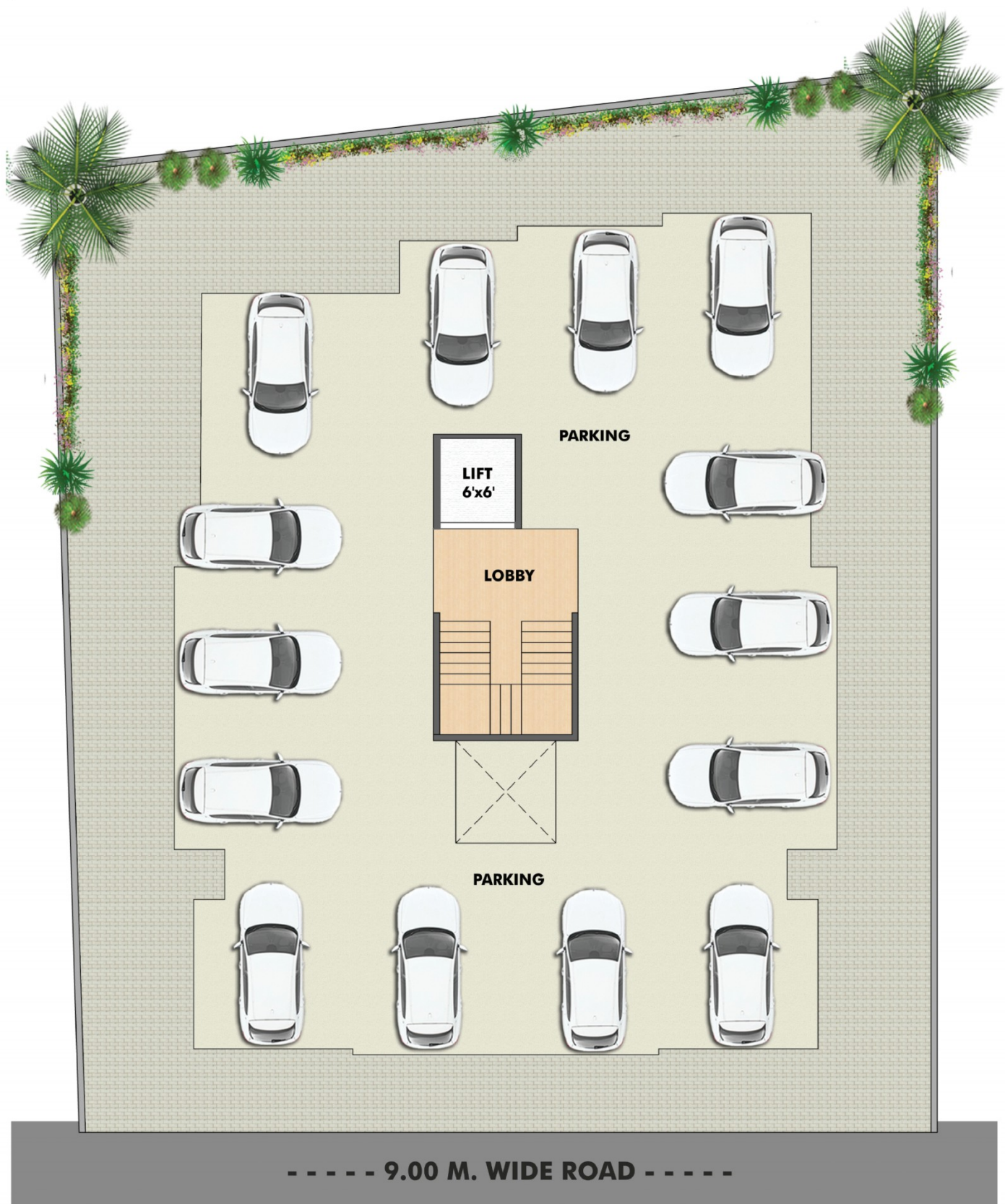


Shreekrushna Heights

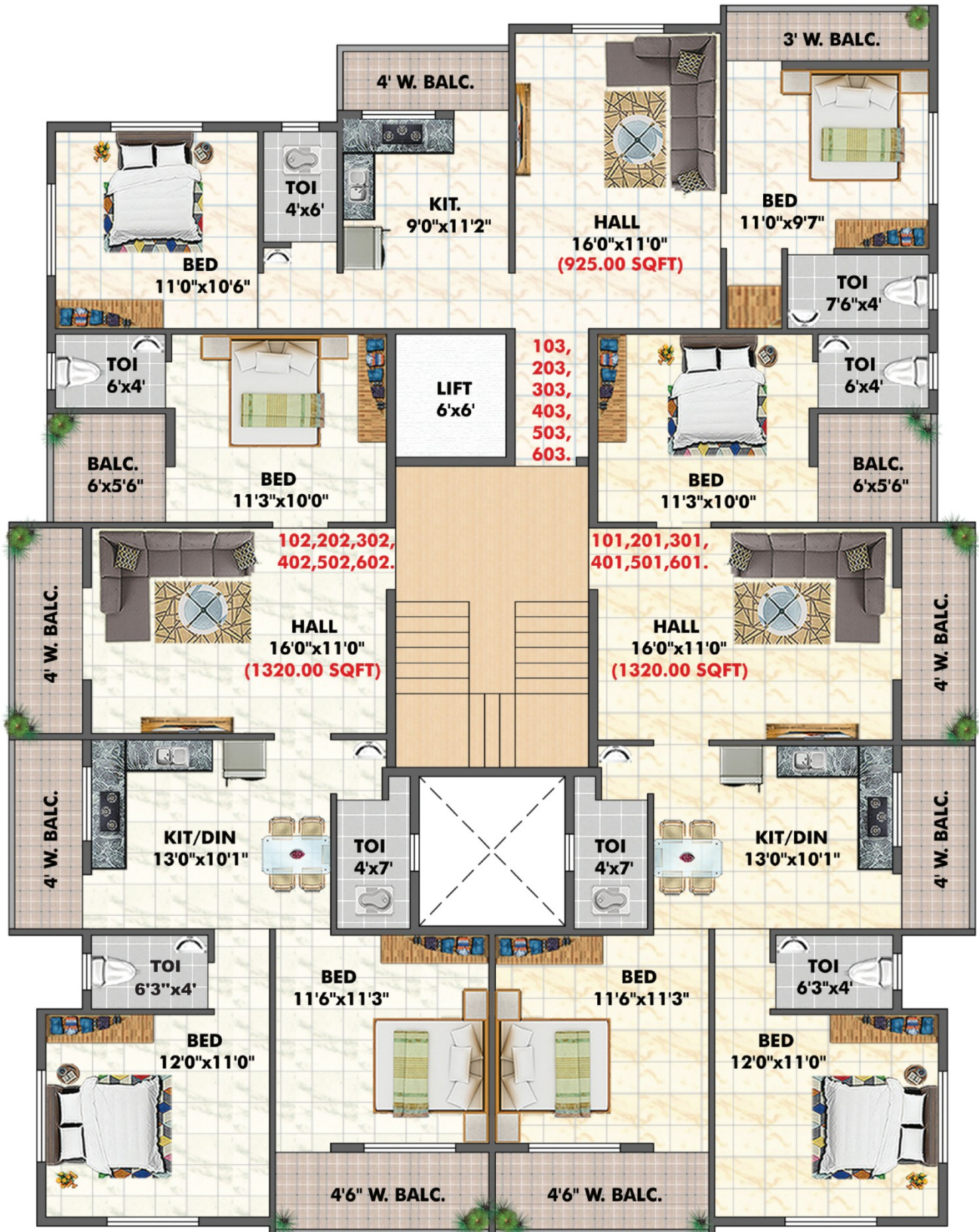


2 BHK & 3 BHK Luxurious Flats
Plot No. 65, Sr. No. 295/A1/1B/32



GROUND FLOOR PLAN





1st TO 6th TYPICAL FLOOR PLAN

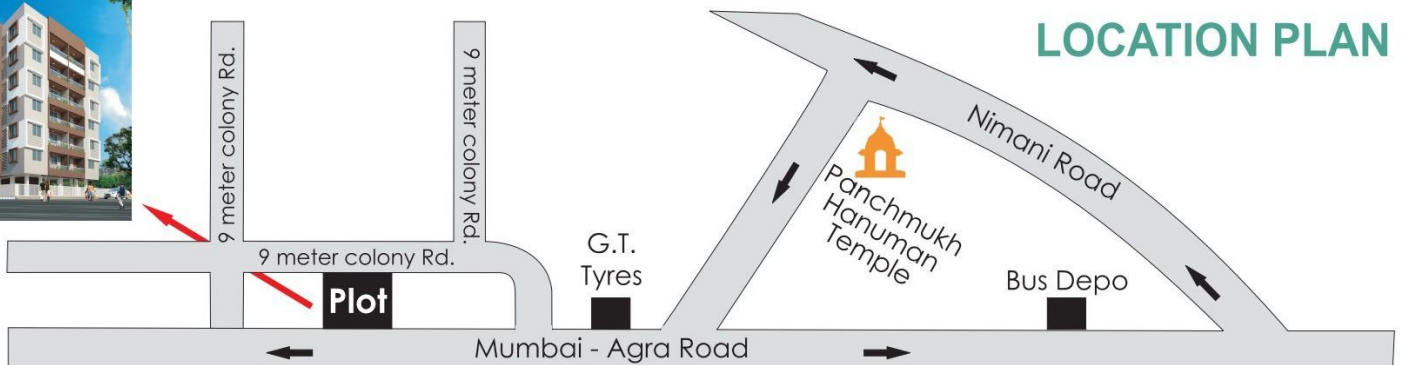


AMENITIES

- **R.C.C. Work :-**
Earthquake Resistant R.C.C. Frame Structure.
- **Brick Work :-**
External Wall 6" Thick and Internal Wall 4" Thick.
- **Flooring :-**
32' x 32' Porcelanosa Tiles Flooring in All Rooms.
- **Kitchen :-**
Kitchen Otta in Granite with Stainless Steel Sink And Glazed Dado Tiles up to Slap Level.
- **Toilet / Bath :-**
Antiskid Floor Tiles in WC & Bath with Glazed Tiles upto Slap Top Level.
- **Plumbing :-**
Concealed Plumbing with Standard Accessories.
- **Electric :-**
Concealed Electrification with Modular Switches.
- **Windows :-**
Powder Coated Aluminium 3 Track Sliding Windows with M. S. Safety Grills with Mosquito Net.
- **Door :-**
Decorative Laminated Main Door with attractive fitting and Safety Latch & internal water proof laminated flush door with S.S. Fitting. Wood Door Frame For Main Door & Others in Granite Frame.
- **Painting :-**
External Acrylic And Internal Tractor Emulsion Paint

EXTRA CHARGES

- 1) M.S.E.B. & Water Connction.
- 2) Stamp Duty, Registration Sale Deed & Legal Fees
- 3) GST & other Govt. Charges as per Govt. Rules
- 4) One time maintanance



Architect



R.C.C.
Aadhar
Engineers

Legal Advisor
Advocate
Yogesh Aher

BOOKING CONTACT

8605941687 / 7020975578

The brochure is not a legal offering, but a conceptual presentation of the scheme. The Developer & Architect reserves the right for any modification and changes in layout. Plan & the specification as per site condition & requirements.